



volunteers wanted

be a "Gig Buddy"



Gig Buddies is a **befriending** project that matches an adult with learning **disability** and/or autism to a **volunteer** with similar interests to attend "gigs" and **events** together.



What is a Gig Buddy?

A Gig Buddy volunteer catches up once a month with an adult who has a mild to moderate learning disability and/or autism.

What do Gig Buddies do together?

Gig Buddies catch up and see live music, opera, musicals, theatre, sport, visit art galleries and museums... it all depends on what you and your buddy like doing.

How does it work?

Step 1

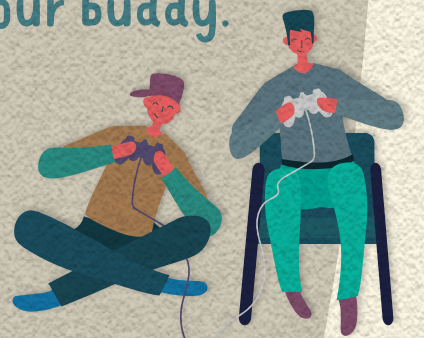
Sign up to volunteer. Step 2 We look for a buddy who has similar interests.

Step 3

We provide volunteer training. Step 4 We introduce you to your buddy.

Step 5

You and your buddy go out together once a month for 1 year (or more)



scan me



if you want to go to events and be friends with an adult with a learning disability
visit www.gigbuddiessydney.org/volunteers